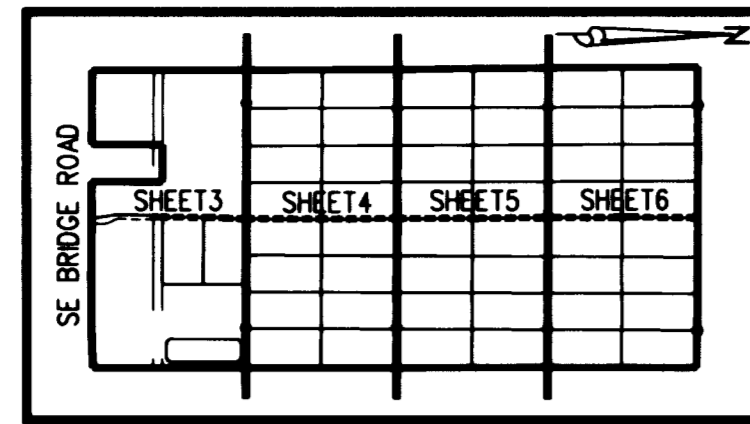
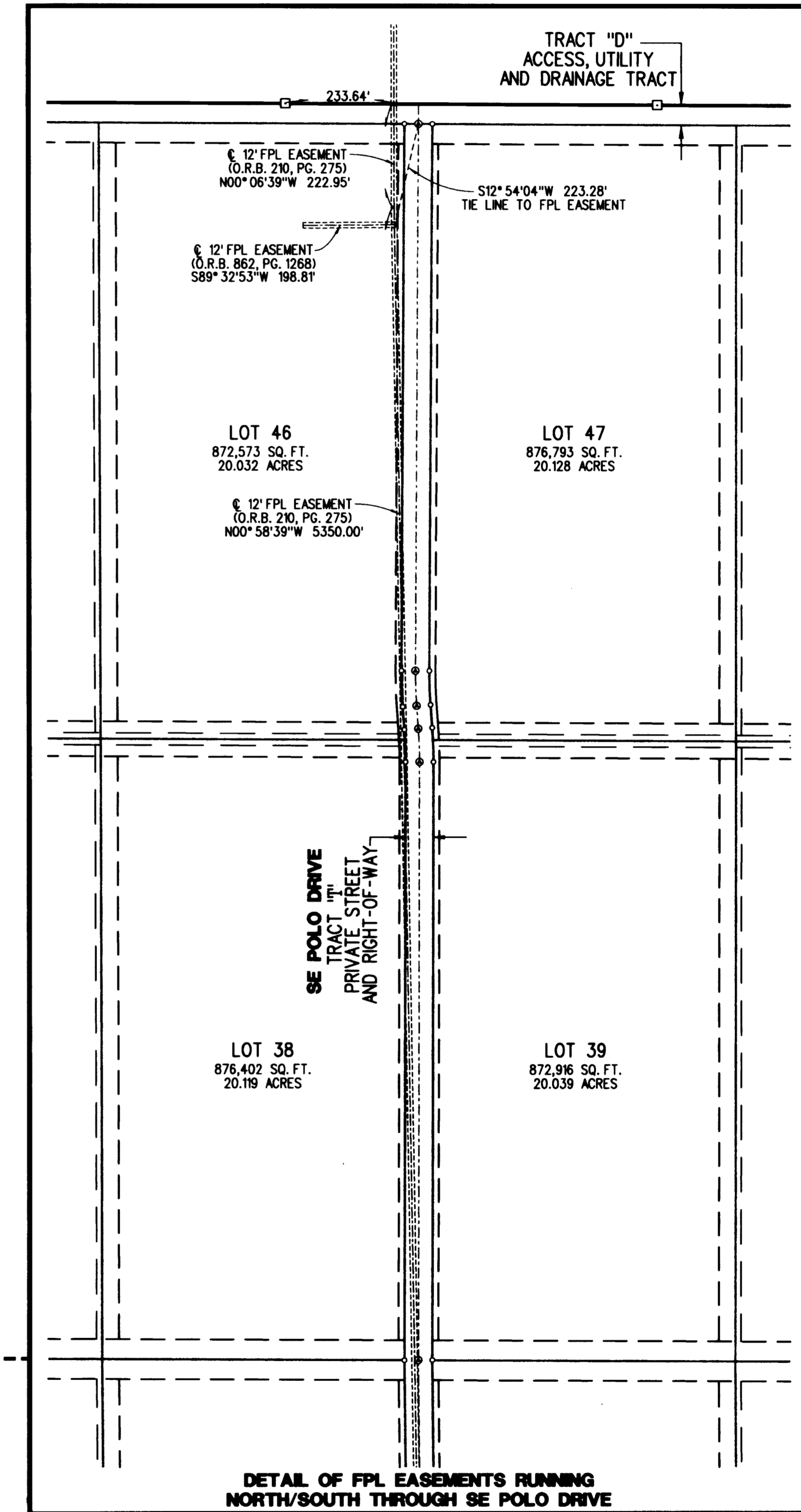
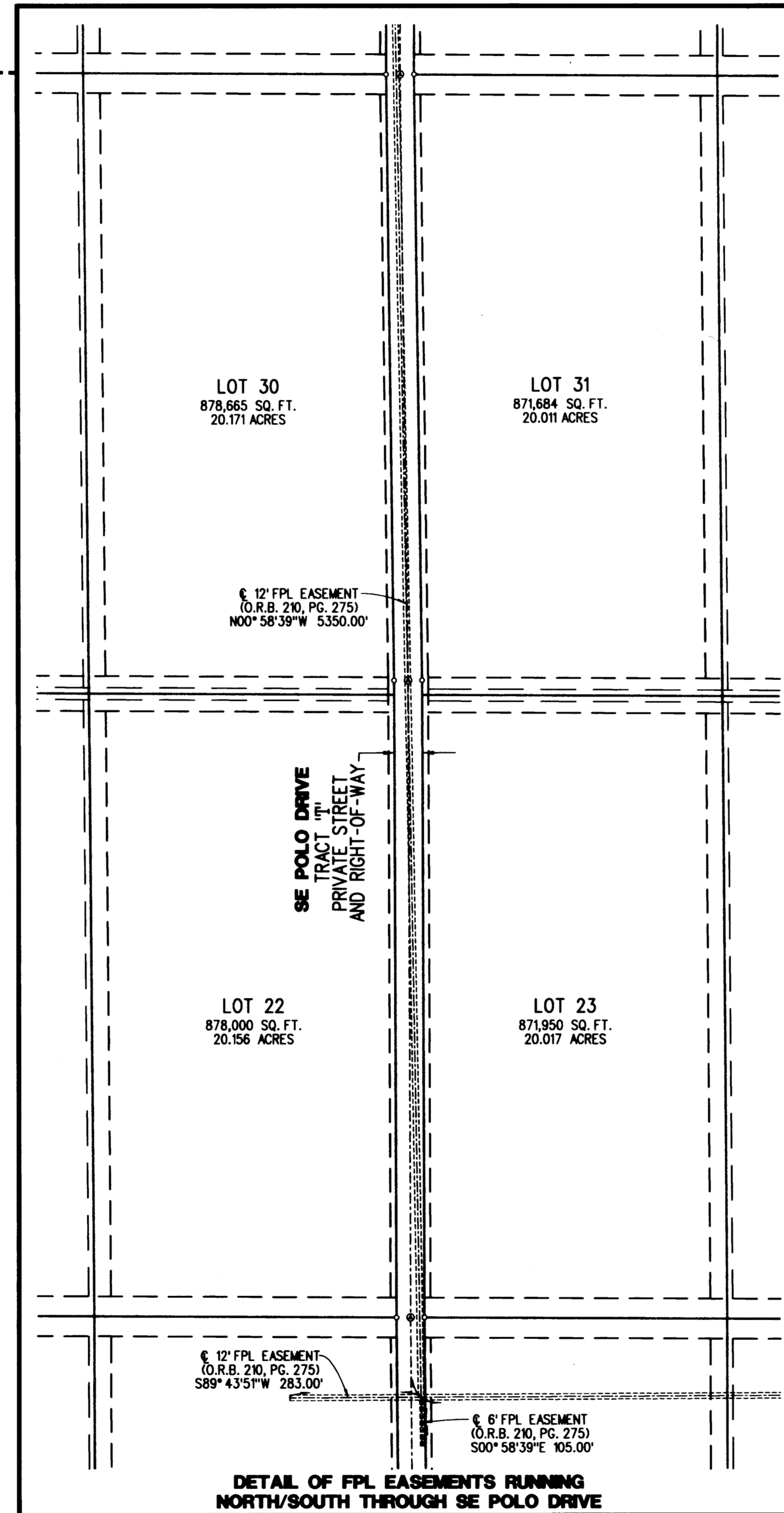
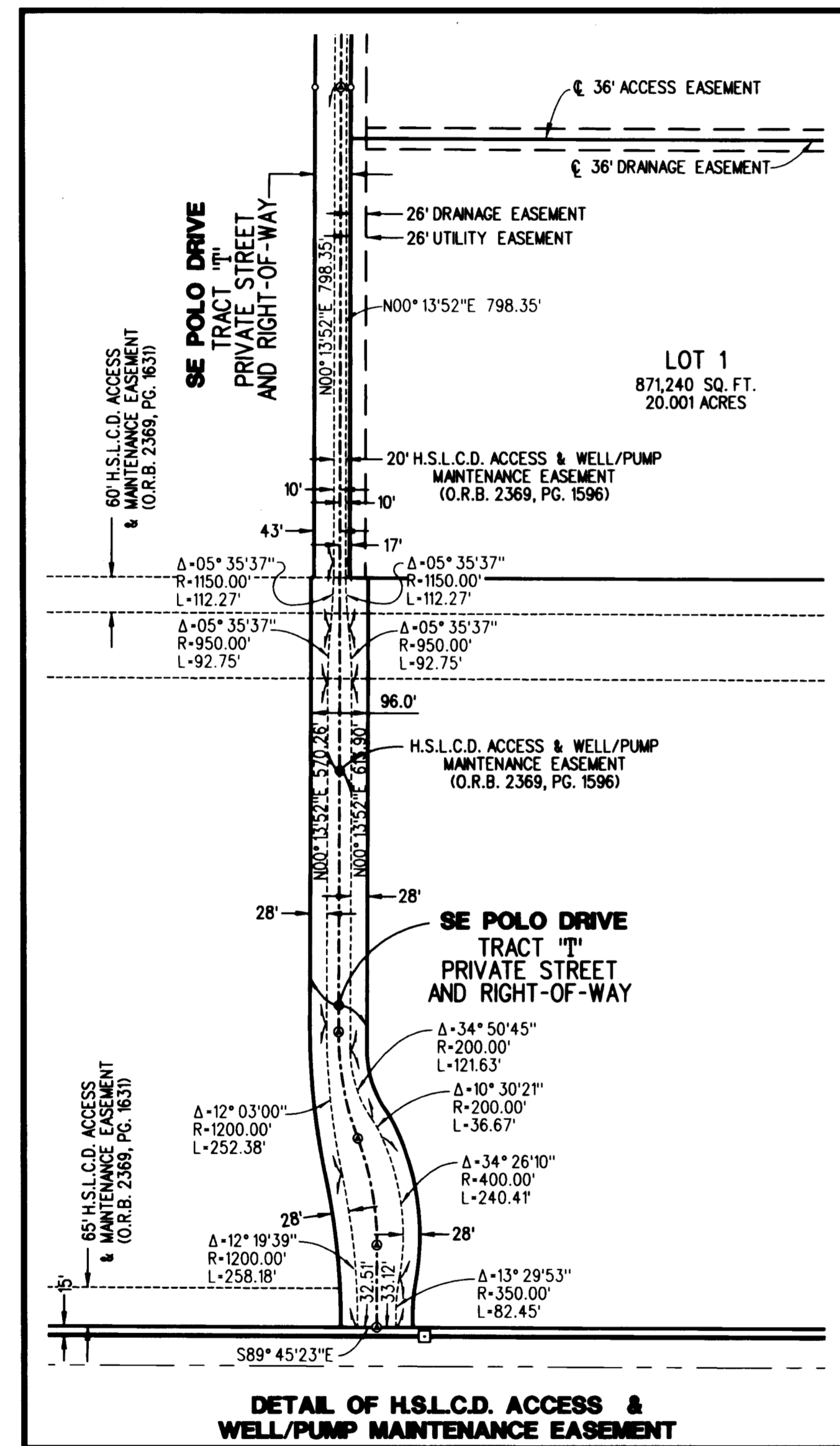
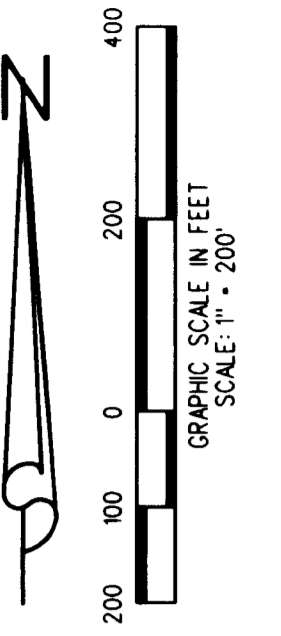


HOBE SOUND POLO CLUB

SITUATE IN SECTIONS 14, 23 AND 26, TOWNSHIP 39 SOUTH,
RANGE 41 EAST, MARTIN COUNTY, FLORIDA



KEY MAP
NOT TO SCALE



SURVEYOR'S NOTES:

- A SET NAIL AND DISK STAMPED "PCP LB 4431" PERMANENT CONTROL POINT (P.C.P.), UNLESS OTHERWISE NOTED.
 - A SET 4"x4" CONCRETE MONUMENT AND DISK STAMPED "PRM LB 4431" PERMANENT REFERENCE MONUMENT (P.R.M.), UNLESS OTHERWISE NOTED.
1. BEARINGS SHOWN HEREON ARE REFERENCED TO THE SOUTH LINE OF SECTION 26, TOWNSHIP 39 SOUTH, RANGE 41 EAST AND SAID LINE BEARS NORTH 89°45'23" WEST.
 2. TO AVOID CONFUSION, SECTION LINES WITHIN THE PLAT BOUNDARY ARE NOT SHOWN ON MAP SHEETS 3 THROUGH 7. SEE MAP SHEET 8 FOR A DETAIL OF SAID SECTION LINES.

3. LINES, WHICH INTERSECT CURVES, ARE NON-RADIAL UNLESS OTHERWISE NOTED.

4. a) THIS PLAT, AS RECORDED IN ITS ORIGINAL FORM IN THE PUBLIC RECORDS, IS THE OFFICIAL DEFINITION OF THE SUBDIVIDED LANDS DESCRIBED HEREON AND WILL IN NO CIRCUMSTANCES BE SUPPLANTED IN AUTHORITY BY ANY OTHER FORM OF THE PLAT, WHETHER GRAPHIC OR DIGITAL.
b) THERE MAY BE ADDITIONAL RESTRICTIONS THAT ARE NOT RECORDED ON THIS PLAT THAT MAY BE FOUND IN THE PUBLIC RECORDS OF THIS COUNTY.

5. THIS INSTRUMENT WAS PREPARED BY RICHARD JEROME WILKIE, P.S.M., IN AND FOR THE OFFICES OF LIDBERG LAND SURVEYING, INC., 675 WEST INDIANTOWN ROAD, SUITE 200, JUPITER, FLORIDA 33458. TELEPHONE (561) 746-8454.

ABBREVIATIONS:

C	= CENTERLINE	NO.	= NUMBER
CB	= CHORD BEARING	(OA)	= OVERALL
CL	= CHORD LENGTH	O.R.B.	= OFFICIAL RECORDS BOOK
C.C.R.	= CERTIFIED CORNER RECORD	PG.	= PAGE
D.E.	= DRAINAGE EASEMENT	P.O.B.	= POINT OF BEGINNING
D.D.T.	= DEPARTMENT OF TRANSPORTATION	P.O.C.	= POINT OF COMMENCEMENT
FND.	= FOUND	P.R.M.	= PERMANENT REFERENCE MONUMENT
F.P.L.	= FLORIDA POWER & LIGHT	(R)	= RADIAL
H.S.L.C.D.	= HOBE-ST. LUCIE CONSERVANCY DISTRICT	R	= RADIUS
L.B.E.	= LANDSCAPE BUFFER EASEMENT	R.O.W.	= RIGHT OF WAY
L	= ARC LENGTH	SE	= SOUTHEAST
M.A.E.	= MAINTENANCE ACCESS EASEMENT	SQ.FT.	= SQUARE FEET
M.E.	= MAINTENANCE EASEMENT	S.R.	= STATE ROAD
		U.E.	= UTILITY EASEMENT
		Δ	= DELTA ANGLE

LIDBERG LAND SURVEYING, INC.
675 West Indiantown Road, Suite 200, Jupiter, Florida 33458 TEL. 561-746-8454

CAD. K\AUST \ BECKER \ 07-02B-306 \ 07-02B-306.DGN			
REF.			
FLD. A.M. & B.D.	FB. 561	PG. 21	JOB 07-02B-306
OFF. R.J.W.	551	04&21	
	548	46,40-57	DATE 11/21/08
	546	40,43&47	
CKD. D.C.L.	SHEET 7	OF 8	DWG. D07-02P